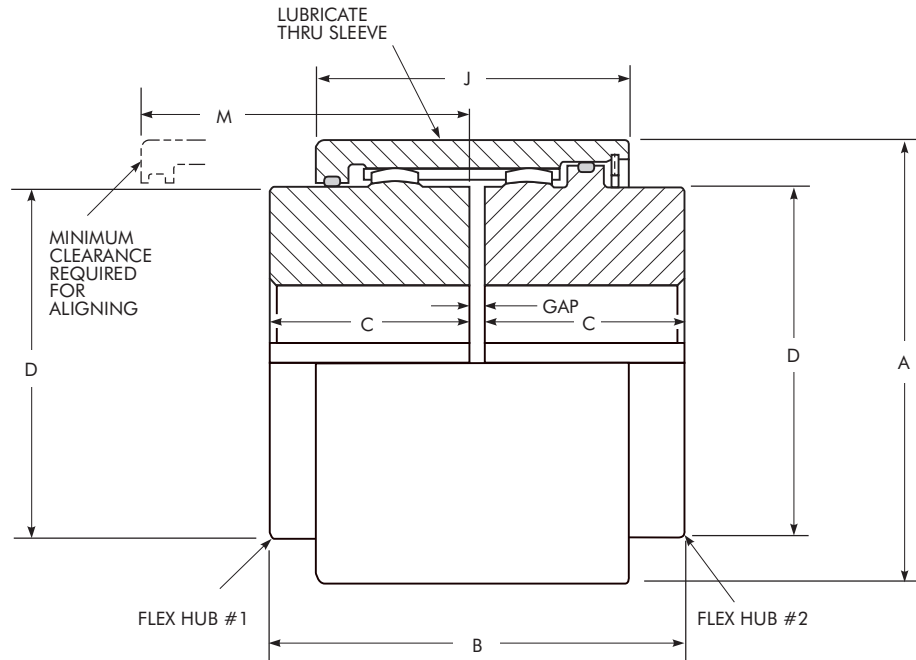


Type GC02 Continuous Sleeve

Double Engagement/Dimensions — Millimeters

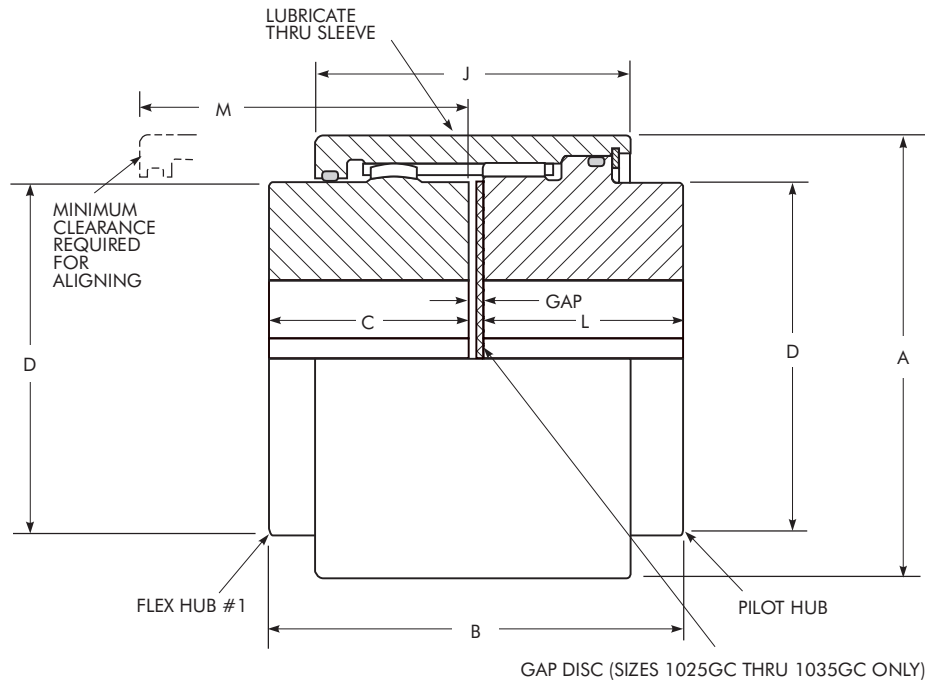


| SIZE ★ | Torque Rating (Nm) † | Allow Speed rpm ‡ | Max Bore (mm) • | Min. Bore (mm) ■ | Cplg Wt With No Bore (kg) | Lube Wt (kg) | DIMENSIONS — Millimeters | | | | | | | SIZE ★ |
|-----------|----------------------------|-------------------------|-----------------------|------------------------|------------------------------------|--------------------|--------------------------|-------|-------|-------|-------|-----|-----|-----------|
| | | | | | | | A | B | C | D | J | M | Gap | |
| 1010GC | 1 140 | 5300 | 50 | 12,7 | 3,45 | 0,0113 | 88,9 | 88,8 | 42,9 | 68,6 | 61,2 | 65 | 3 | 1010GC |
| 1015GC | 2 350 | 4300 | 65 | 19,0 | 6,17 | 0,0283 | 109,2 | 101,6 | 49,3 | 86,4 | 76,2 | 81 | 3 | 1015GC |
| 1020GC | 4 270 | 3700 | 78 | 25,4 | 11,3 | 0,0425 | 132,1 | 127,0 | 62,0 | 105,2 | 94,5 | 99 | 3 | 1020GC |
| 1025GC | 7 470 | 3300 | 98 | 31,8 | 21,3 | 0,0652 | 163,6 | 159,0 | 77,0 | 130,6 | 109,1 | 116 | 5 | 1025GC |
| 1030GC | 12 100 | 2900 | 111 | 38,1 | 34,0 | 0,0936 | 190,5 | 187,4 | 91,2 | 152,4 | 119,9 | 126 | 5 | 1030GC |
| 1035GC | 18 500 | 2600 | 134 | 50,8 | 51,7 | 0,1219 | 215,9 | 218,8 | 106,4 | 177,8 | 133,5 | 140 | 6 | 1035GC |

★ See Page 15 for General Information and Reference Notes.

Type GC05 Continuous Sleeve

Single Engagement/Dimensions — Millimeters

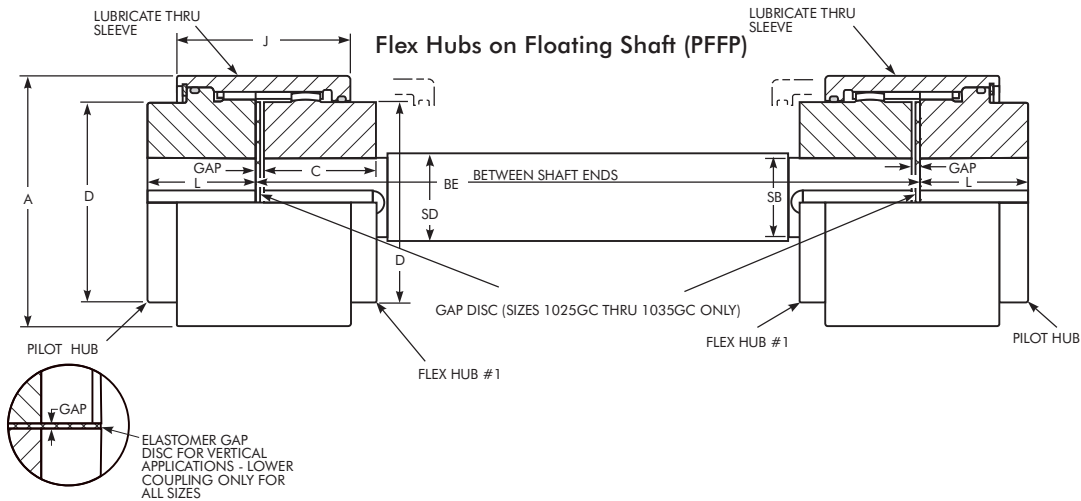


| SIZE ★ | Torque Rating (Nm) [†] | Allow Speed rpm [‡] | Max Bore (mm) [•] | Min. Bore (mm) [■] | Cplg Wt With No Bore (kg) | Lube Wt (kg) | DIMENSIONS — Millimeters | | | | | | | SIZE ★ | |
|---------------|---------------------------------------|------------------------------------|----------------------------------|-----------------------------------|------------------------------------|--------------------|--------------------------|-------|-------|-------|-------|-------|-----|-----------|---------------|
| | | | | | | | A | B | C | D | J | L | M | | Gap |
| 1010GC | 1 140 | 5300 | 50 | 12,7 | 3,49 | 0,00850 | 88,9 | 88,9 | 42,9 | 68,6 | 61,2 | 42,9 | 65 | 3 | 1010GC |
| 1015GC | 2 350 | 4300 | 65 | 19,0 | 6,40 | 0,0198 | 109,2 | 103,6 | 49,3 | 86,4 | 76,2 | 51,1 | 81 | 3 | 1015GC |
| 1020GC | 4 270 | 3700 | 78 | 25,4 | 11,7 | 0,0312 | 132,1 | 128,8 | 62,0 | 105,2 | 94,5 | 63,8 | 99 | 3 | 1020GC |
| 1025GC | 7 470 | 3300 | 98 | 31,8 | 21,8 | 0,0522 | 163,6 | 158,8 | 77,0 | 130,6 | 109,1 | 77,0 | 116 | 5 | 1025GC |
| 1030GC | 12 100 | 2900 | 111 | 38,1 | 34,6 | 0,0730 | 190,5 | 187,2 | 91,2 | 152,4 | 119,9 | 91,2 | 126 | 5 | 1030GC |
| 1035GC | 18 500 | 2600 | 134 | 50,8 | 52,2 | 0,0957 | 215,9 | 219,2 | 106,4 | 177,8 | 133,5 | 106,4 | 140 | 6 | 1035GC |

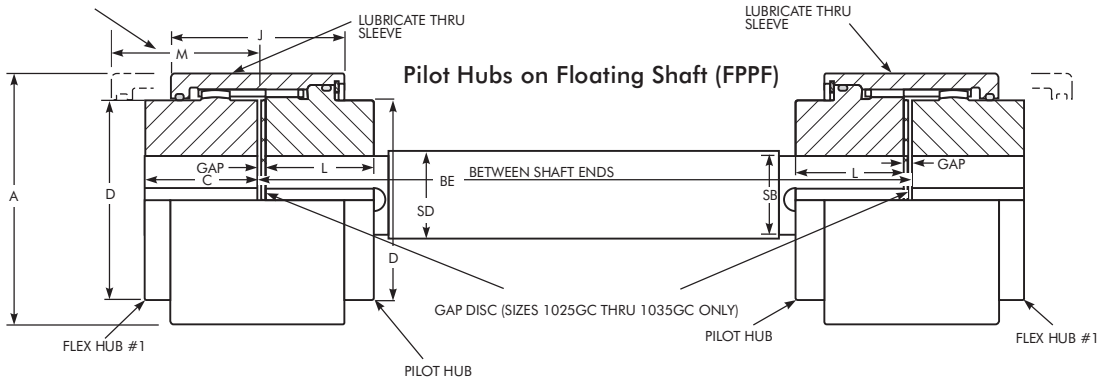
★ See Page 15 for General Information and Reference Notes.

Type GC05 Continuous Sleeve

Floating Shaft Single Engagement/Dimensions — Millimeters



MINIMUM CLEARANCE REQUIRED FOR ALIGNING



| SIZE ★ | Assembly Torque Rating Nm † | Max Bore (mm) • | Min Bore (mm) ■ | Wt – Each Cplg w/o Bore (kg) | Lube Wt (kg) | DIMENSIONS — Millimeters | | | | | | | | SIZE ★ | |
|-----------|--------------------------------------|-----------------------|-----------------------|---------------------------------------|--------------------|--------------------------|--------|-------|-------|-------|-------|-------|-----|-----------|--------|
| | | | | | | A | BE Min | | C | D | J | L | M | | Gap |
| | | | | | | | PF-FP | FP-PF | | | | | | | |
| 1010GC | 1 140 | 50 | 12,7 | 3,49 | 0,00850 | 88,9 | 190 | 92,2 | 42,9 | 68,6 | 61,2 | 42,9 | 65 | 3 | 1010GC |
| 1015GC | 2 350 | 65 | 19,0 | 6,40 | 0,0198 | 109,2 | 235 | 104,9 | 49,3 | 86,4 | 76,2 | 51,1 | 81 | 3 | 1015GC |
| 1020GC | 4 270 | 78 | 25,4 | 11,7 | 0,0312 | 132,1 | 290 | 130,3 | 62,0 | 105,2 | 94,5 | 63,8 | 99 | 3 | 1020GC |
| 1025GC | 7 470 | 98 | 31,8 | 21,8 | 0,0522 | 163,6 | 338 | 163,6 | 77,0 | 130,6 | 109,1 | 77,0 | 116 | 5 | 1025GC |
| 1030GC | 12 100 | 111 | 38,1 | 34,6 | 0,0730 | 190,5 | 368 | 192,0 | 91,2 | 152,4 | 119,9 | 91,2 | 126 | 5 | 1030GC |
| 1035GC | 18 500 | 134 | 50,8 | 52,2 | 0,0957 | 215,9 | 413 | 225,6 | 106,4 | 177,8 | 133,5 | 106,4 | 140 | 6 | 1035GC |

| SIZE ★ | Assembly Torque Rating Nm † | SB Shaft End Diameter (mm) | SD Shaft Diameter (mm) | Weight (kg per mm) | WR ² (KgM ² per mm) | Maximum BE (mm) for Various RPM's* | | | | | | | SIZE ★ |
|-----------|--------------------------------------|-------------------------------------|---------------------------------|--------------------------|---|------------------------------------|----------------|----------------|----------------|-------------------|--------------------------|-------------------|-----------|
| | | | | | | 1750 | 1430 | 1170 | 870 | 720 | 580 | 540 or Less | |
| | | | | | | 1010G | 439 1 140 | 38,1 47,6 | 39,7 50,8 | 0,00964 0,0159 | 0,00000196 0,00000518 | 1 371 1 549 | |
| 1015G | 1 169 2 350 | 50,8 60,3 | 54,0 63,5 | 0,0179 0,0248 | 0,00000657 0,0000126 | 1 600 1 752 | 1 778 1 930 | 1 955 2 133 | 2 286 2 463 | 2 514 2 717 | 2 794 3 022 | 2 870 3 124 | 1015G |
| 1020G | 2 282 4 270 | 63,5 73,0 | 66,7 76,2 | 0,0273 0,0357 | 0,0000152 0,0000259 | 1 778 1 905 | 1 981 2 108 | 2 184 2 336 | 2 540 2 717 | 2 794 2 971 | 3 098 3 237 | 3 200 3 429 | 1020G |
| 1025G | 4 463 7 470 | 79,4 92,1 | 82,6 95,2 | 0,0420 0,0559 | 0,0000357 0,0000634 | 1 981 2 133 | 2 209 2 362 | 2 438 2 616 | 2 819 3 022 | 3 098 3 327 | 3 454 3 708 | 3 556 3 835 | 1020G |
| 1030G | 8 508 12 100 | 98,4 104,8 | 101,6 108,0 | 0,0636 0,0718 | 0,0000820 0,000104 | 2 209 2 260 | 2 438 2 514 | 2 692 2 794 | 3 124 3 225 | 3 454 3 556 | 3 835 3 962 | 3 962 4 064 | 1030G |
| 1035G | 13 333 18 500 | 114,3 123,8 | 120,6 127,0 | 0,0896 0,0993 | 0,000163 0,000200 | 2 413 2 463 | 2 667 2 717 | 2 946 3 022 | 3 403 3 505 | 3 759 3 860 | 4 191 4 292 | 4 292 4 419 | 1035G |

★ Refer to Page 15 for General Information and Reference Notes.

▲ Limited by coupling size, shaft end diameter or both. Refer to Page 22 for selection procedure.

♣ Interpolate for intermediate speeds. Maximum BE is based on 70% of critical speed. Refer to the Factory for higher running speeds.